

# Greater Lynn Photographic Association 2009-2010 Digital Image Competition RULES, GUIDELINES AND PROCEDURES

**Please note the change for the competition of digital images in the Digital Image Competition for the coming year. This is being done to allow slide makers to continue to compete, but in a digital format. The Board of Directors of the club does not want to leave out any member who wishes to compete but still uses the slide format. However we have found that asking the judges to judge slides and digital side by side is very difficult for them. Some of them no longer own projectors. Please read these rules carefully.**

**The Digital Image Competition** is open to all members who have paid their dues for the club year. Competitions will generally be held on the third Monday of the month in October 2009, November 2009, January 2010, February 2010, March 2010, and April 2010.

Slides. All slides entered for the monthly competitions will be scanned by Rick Cloran or Jake Mosser, and then entered as digital images to the judges for the judging process. We will not be giving the judges any slides to look at. The slides will also be seen as digital images the night of the competition at the club. If at all possible we would like to get the slides one week earlier than the normal deadline, so we have time to scan them

Classes. There will three classes: Class B (beginners), Class A (medium), and Masters (top / invitation only). People will be assigned to a class based on past performance and expected prophecy. You will be notified by mid-September of your class. Should you feel you have been placed in the incorrect group, you will have time to request a change. At the end of the year the top 3 competitors in Class B, will automatically be moved up to Class A for the next year.

Number of Allowed Images. Masters may submit four (4) images and Classes A and B three (3) images.

Scoring. Scoring will be from 8-15 points. First, second and third place ribbons will be awarded, as well as an appropriate number of honorable mentions. An "Image of the Month" award will also be given. As our form of scoring is cumulative, if you wish to be an active competitor, you must submit 3 images per month (or 4 for Masters), every month, or you will lose points. In other words, each image will be scored 8–15 points. The total points for the images submitted will be carried through and added to the next month's scores, etc., until all six monthly competitions are completed. Therefore, you must start competing in October to have a chance at a year-end award.

Categories. For the upcoming year we will be eliminating the Black and White category, as there were not usually enough images submitted each month to sustain it on its own. You may of course still enter B & W, but it should go into the category that best fits the image, be it general, nature, people, scenic or digital art.

We will have a total of five categories: General, Nature, Digital Art (formerly Creative), People, and Scenic. In addition, *we have changed the description of some of the categories.* For instance, the General category is for images that DO NOT qualify for the other categories, e.g. domestic animals, cultivated flowers, photojournalism/sports, frame filling architectural images, etc. People are now just people – formal or candid shots. PJ fits in General. **A complete list of these definitions is listed below. Please read through them.**

The purpose of the club competitions is as a learning tool, not just for scores and "winning." As such, images should be entered in their correct category. The chairman will have the right to move them accordingly.

**General:** This category is for images that DO NOT qualify for the other categories, e.g. domestic animals, cultivated flowers, photojournalism/sports, frame filling architectural images, etc. Images in this category may be as taken or mildly enhanced. "Realistic Composite Images" (an image created from multiple images, all the work of the maker, that retains the appearance of reality) or "Mildly Altered" (an image with color enhancement, softening (partial and full) unobtrusive filtering, example: mild poster edges, etc.) are allowed. Also allowed is the removal of elements, such as telephone wires and other objectionable items. General images shall retain an overriding sense of reality. It meets the criteria of "**Digital Realism**" where enhancements and modifications are allowed to improve a presentation but without changing the taken truth of the original exposure.

Photojournalism is devoted to recording current events or situations to preserve them for the future. News, features, man and man's environment, human interest . . . . all are included. Manipulations to photojournalism images must be kept to a minimum and used only to "finish" the existing image, i.e. levels, exposure, tonal, sharpening, adjustments to exposure, contrast, sharpness and cropping.

**Digital Art:** "**Digital Art,**" on the other hand, are digital images that exceed the definition of "Digital Realism" and are to be entered in the Digital Art category. Any "altered reality" images must be entered in the Digital Art category. This category is designed to show the skill and imagination of the photographer as well as their skill with image editing. Images in this category will be judged on their imagination, creativity, uniqueness, and editing skills. Remember: **Elements not the sole creation of the maker are not allowed.**

**People:** People is a category devoted to humans as the subject with the person or persons as the dominant subject(s). Images made in studio or as candid photographs are to be judged equally. Images may be manipulated to enhance or de-emphasize backgrounds or complexions. Full background replacements aka "green screening" are considered extensive and should be submitted in Digital Art. Traditional adjustments such as cropping and the use of softening blurs or filters and vignetting etc. are allowed provided the sense of reality is maintained. Photojournalistic images are allowed in the people category provided the emphasis is on the individual (i.e. the person) and not what they are doing (i.e., the activity or environment). Please note, other PJ shots should now be entered in the General category.

**Nature:** Nature includes any subject which represents the undisturbed world. The handiwork of man should not be visible or implied. Domestic animals, cultivated flowers or taxidermy subjects are not allowed. However a subject such as a barn swallow's nest, which shows a portion of a barn is permissible as this is the bird's natural habitat. Controlled subjects such as zoo animals are permitted provided man-made objects are not discernable. Makers may perform any enhancements and modifications that improve the presentation of the image that could have been done at the time the image was taken but that does not change the truth of the original nature story. Cropping and horizontal flipping (equivalent to reversing a slide) are acceptable modifications. Addition of elements, removal of elements other than by cropping, combining elements from separate images, rearranging elements or cloning elements are not acceptable.

**Scenics:** Scenics are views of the land or sea. Buildings, boats or people may be included in the scene, but are to be supportive, not frame filling primary subjects. Makers may perform any enhancements and modifications that improve the presentation of the image that could have been done at the time the image was taken but that does not change the truth of the original nature story. Cropping and horizontal flipping (equivalent to reversing a slide) or simple "digital darkroom" adjustments to correct color casts, brightness, contrast or saturation as well as minor cloning to remove (not add) small distractions are acceptable modifications.

Adding of elements by masking or cloning, removing elements other than by cropping, combining elements from separate images, and rearranging elements within an image is not acceptable.

The sole exception to this is the merger of multiple images of the same scene taken at the same time into a traditional panoramic scenic. Images with more extensive adjustments and photo composite scenics should be entered in General or Digital Art depending on the extent and nature of the manipulations made.

Deadline For Entry. The image files and slides must be submitted in advance, but **no later than two weeks before the competition.** See *The Filter* or the calendar on the club's web site for the deadline to receive image files. **Digital** image files must be entered using the online form available at the club's website. You do not need to rename your digital images – the entry form will do that for you. You will get a return email confirming receipt of your digital images within a day or two. If you do not receive a confirmation email, please contact the chairman. Please let the chairman know if you have trouble accessing the online form. Electronic images will not be returned. **Slides** may be brought to the club or mailed to Susan Mosser at 173 Central Street, No. Reading, MA 01864.

**Slides** (submitted to Susan) must have your name, a title, the category, and a thumb spot. Holding the slide so the image looks the way you want it to appear on the screen, place the thumb spot in the lower left-hand corner of the slide. This will allow it to be projected on the screen correctly.

**Digital** (submitted to Pam through the online form) All elements of an image must be exclusively the work of the person submitting the image, have originated as photographs (image/captures of objects via light sensitivity) made by the entrant on photographic emulsion or acquired digitally. Elements created as graphic art are allowed only in the Digital Art category, must not be the overriding element of the composition, and must be exclusively the work of the person submitting the image. Elements not the sole creation of the maker are NOT allowed. By virtue of submitting an entry, the entrant certifies the work as his/her own. Images may be altered, either electronically or otherwise, by the maker and artwork or computer graphics created by the maker may be incorporated if the photographic content predominates. All final work must be an electronic file. All images must have a title.

Preparing Digital Images For Entry. The projector is set for 1024 x 768 pixels. Your image dimensions should be within these numbers but does not necessarily need to match this ratio. Normally, you will set the width at 1024 for horizontal images, or set the height at 768 for vertical images. By using the "Constrain Proportions" option, you only need to set one dimension, and your image editing software will make the appropriate setting for the other dimension, and it may not be the number indicated here. For example, you may set your width to 1024, and using "Constrain Proportions," the height dimension may be set at 681. This will project correctly.

Sizing and saving your images. In Photoshop or your favorite Image Editing Software:

1. Crop your image for best composition.
2. Choose: IMAGE>IMAGE SIZE
  - a. Make sure constrain proportions is checked
  - b. Make sure resample image is checked
  - c. For Horizontal composition photographs: **Set width to 1024 pixels or smaller.**  
Height will automatically adjust to the correct proportion
  - d. For Vertical composition photographs: **Set height to 768 pixels or smaller.**  
Width will automatically adjust to correct proportion
  - e. **Resolution should be 100**
  - f. **Select JPEG File Format - JPEG quality of 7-8.**
3. Save the image to your computer wherever you wish and naming it anything meaningful to you.
4. Using the online entry form, fill in the required information (class, name, and email address).

Select the appropriate month of competition. Type the title for your first image, select the appropriate category, then Browse to where the image is located on your computer and select it. After entering all of your images, click on the Verify button. This checks to make sure your information has been entered and that the images meet the sizing requirements. You will then come to another screen which confirms your images are okay and that you can submit them by clicking on the button. This entry form will save your image and information in an appropriate format on the club's computer.

## **TEST IMAGES:**

Calibration of your monitor is an important part of getting consistent images.

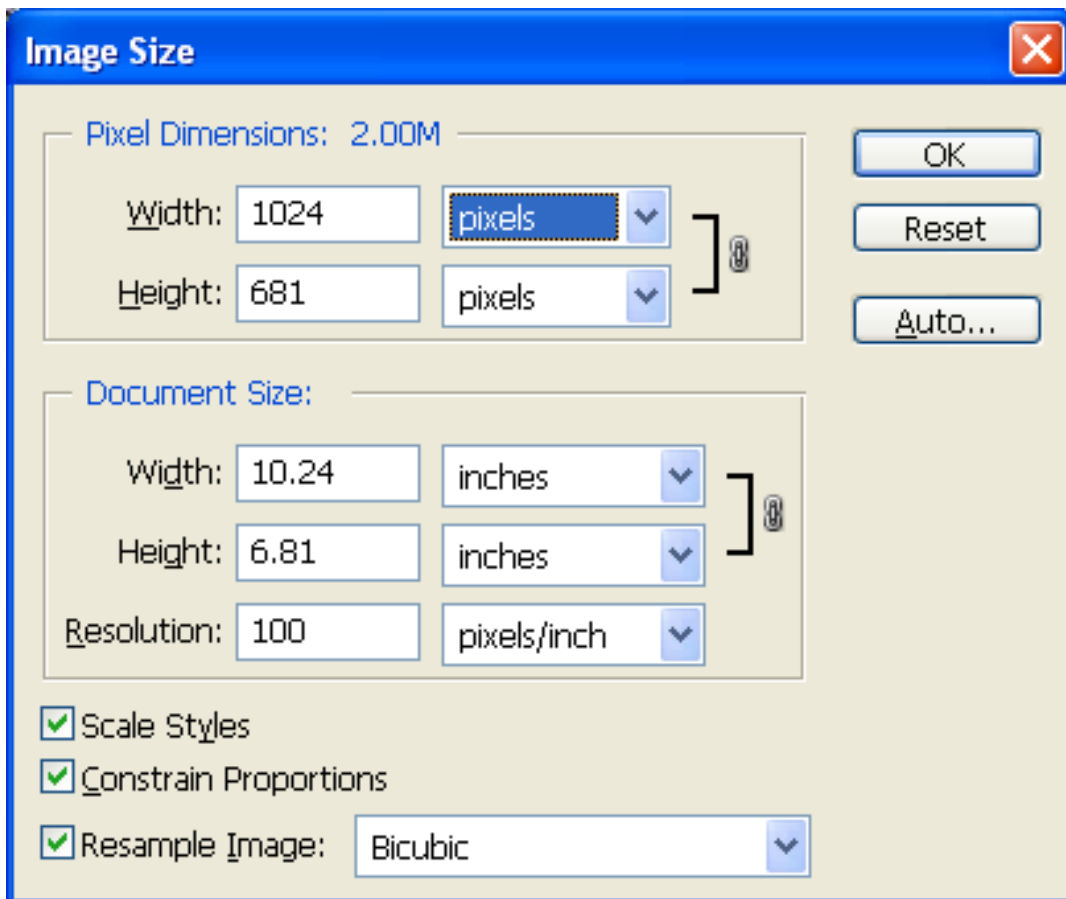
We encourage you to use a monitor calibration system to insure your monitor is giving you accurate color renditions. We are also providing on GLPA's website two sample test images (PSA's Test Image and Tim Grey's Test Image) which can be used to verify that your monitor is calibrated. The PSA Test Image shows the three RGB color strips and a Grayscale. Tim Grey's Test Image has a variety of objects that will let you evaluate the accuracy of your monitor. (It can also be used for your evaluating the accuracy of your printing.) Go to the club website to download the Test Images.

The best way to view the Test Images is to right click on them (control click on a Mac) and save them to your hard drive. Then open them with Photoshop (or another image editing program) and view it at 100% at full screen. The PSA Test Image should show 21 different shades of black/gray/white. The 0% gray rectangle should be black. The 5% rectangle should be slightly lighter than black. The 100% gray rectangle should be pure white. The 95% gray rectangle should be slightly darker than white. If you are not using another monitor calibration method, the Adobe Gamma control panel is a good method to adjust a phosphor tube monitor. Use a gamma of 2.2. The Adobe Gamma control panel is included with full versions of Photoshop. If you do not have the Adobe Gamma

control panel, manually adjust the brightness and contrast on your monitor until the test image looks best. If you use Photoshop, it is recommended that you set your image to color profile sRGB.

You can also download the Fuji Calibration Images from <http://www.photoguild.ns.ca/events/calibration.html> and use them to check your monitor calibration.

**Thanks for competing and good luck to everyone!!**

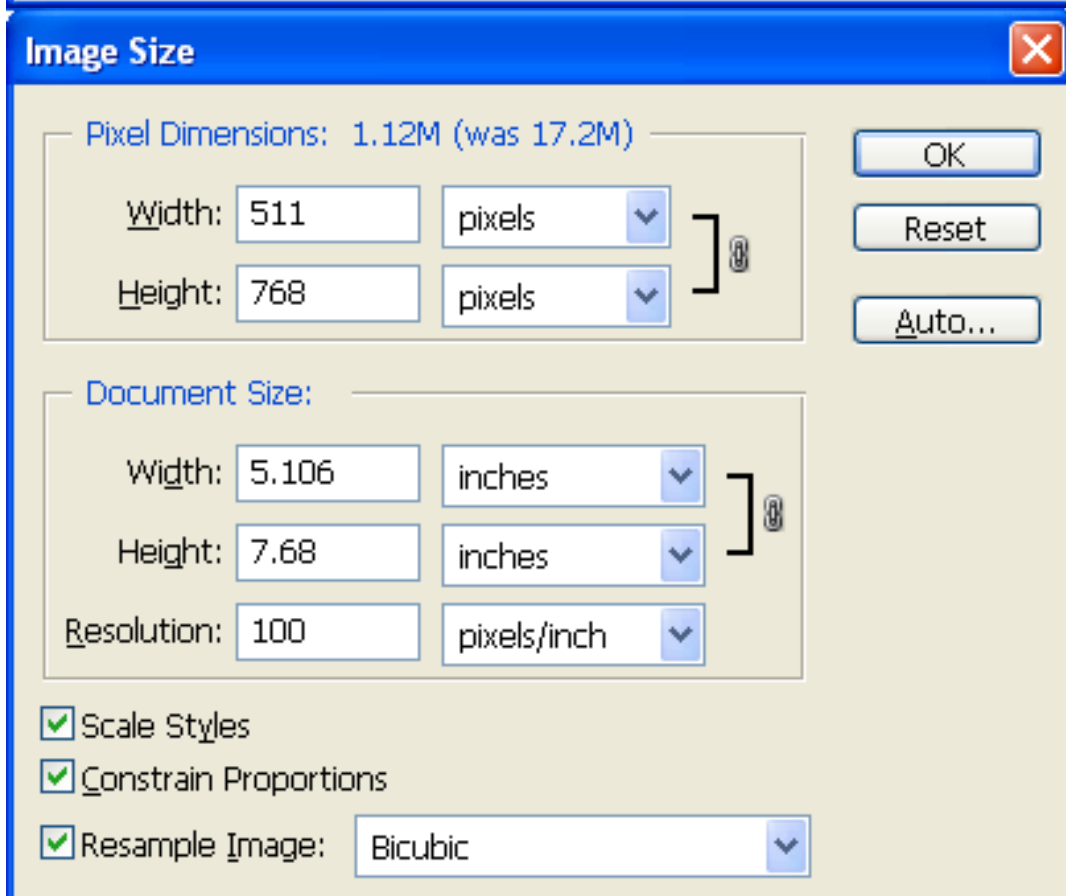


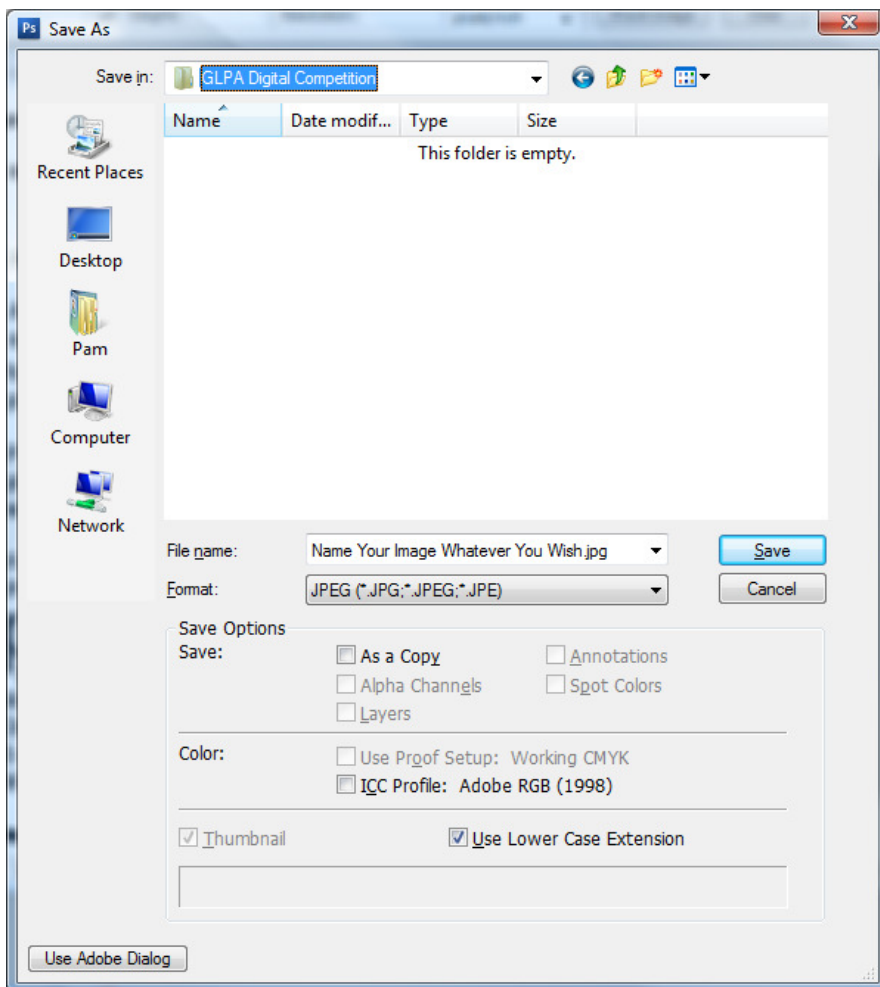
Set  
Resolution  
first!!!

Then set  
Width at  
1024 for  
Horizontals

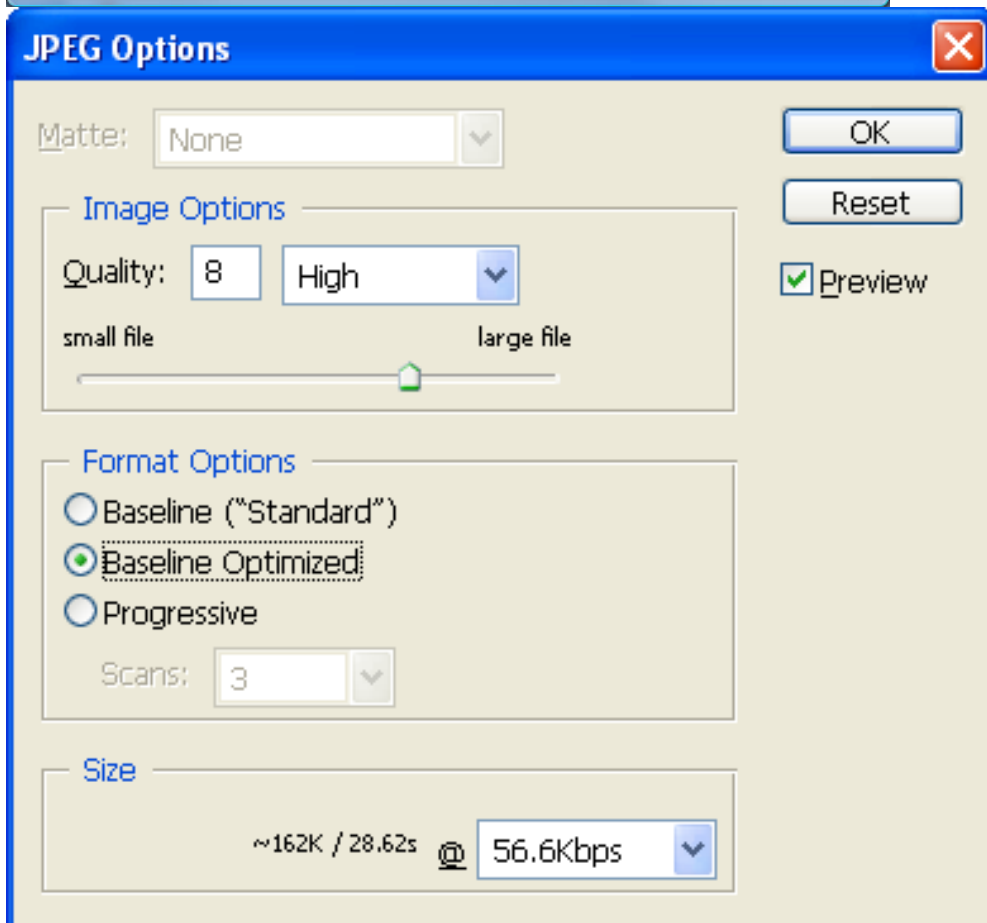
or

set Height  
at 768 for  
Verticals





Save file in the format shown and naming the file anything meaningful to you. Be sure it is a JPEG file



Using 7-8 for Quality